

CANCER COSTS and the IMPACT to EMPLOYEES

Current State of Cancer in the US

Cancer is increasingly common



1.9M

new cancer diagnoses
in the US in 2022¹



\$5.3T

total cost of cancer
in the US by 2050²

Highest spend condition for employers

\$125B

direct employer
medical costs due to
cancer treatment in 2021³



\$139M

cost to employers in
lost productivity
and work time⁴

There's hope in evolving treatment options

30K+

registered clinical trials⁵

& 2,300+
new trials each year⁶



33%

decrease in the
cancer mortality
rate from 1991 to
2020⁷

The Impact on Employees

Cancer costs are toxic

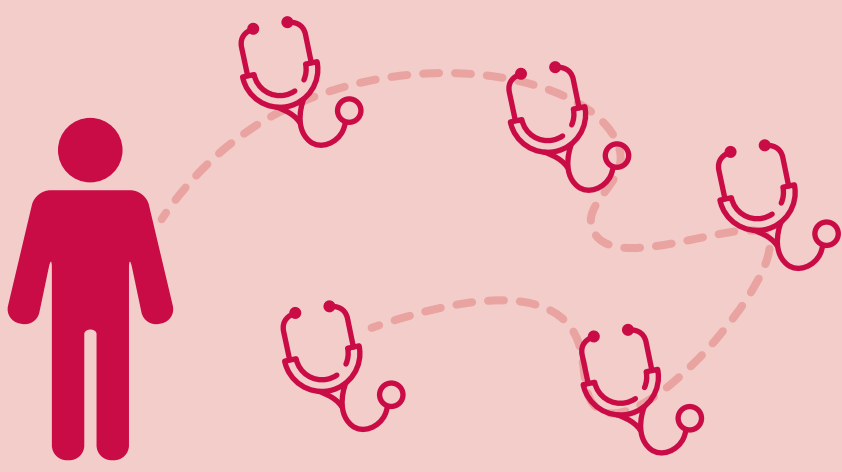
More than **40%**

of patients with cancer spend their
entire life savings in the first
two years of treatment⁸



The path can be unclear

Patients with cancer see an
**average of 5 different
specialists** during treatment⁹



Lung
cancer

9%

rate of misdiagnosis¹⁰



Breast
cancer

20%

rate of discrepancies in
treatment between first
and second opinions¹¹

Summus Oncology

Better access. Better decisions. Better outcomes.

25%

of members change
their treatment path
after speaking with a
Summus network
specialist



52%

reduction in
treatment costs
for members
who changed
their treatment
path



SUMMUS

www.summusglobal.com

1. Costs-of-Cancer-2020-10222020.pdf (fightcancer.org)
 2. <https://jamanetwork.com/journals/jamaoncology/fullarticle/2801798>
 3. Paying Attention to Cancer Pays Off for Your Employees — Johns Hopkins HealthCare Solutions, 2017.
 4. Ibid.
 5. <https://www.who.int/observatories/global-observatory-on-health-research-and-development/monitoring/number-of-trial-registrations-by-year-location-disease-and-phase-of-development#data-sources>
 6. <https://www.statista.com/statistics/1092600/oncology-clinical-trial-starts-worldwide/>
 7. <https://www.nih.gov/news-events/news-releases/annual-report-nation-cancer-deaths-continue-downward-trend-modest-improvements-survival-pancreatic-cancer>
 8. Gilligan, Adrienne M, et al. (2018) Death or Debt? National Estimates of Financial Toxicity in Persons with Newly-Diagnosed Cancer. The American Journal of Medicine, 131(10), 1187-1199. <https://doi.org/10.1016/j.amjmed.2018.05.020>
 9. <https://www.ncbi.nlm.nih.gov/pmc/articles/PMC9194628/>
 10. Schook, R. M., ter Avest, M. J., van Setten, C. H., de Man, F. S., Smit, E. F., & Postmus, P. E. (2014). Lung Cancer Patients Benefit from Second Opinions by Improvement of Diagnosis and Therapy. Cancer and Clinical Oncology, 3(1), 43-57. <https://doi.org/10.5539/cco.v3n1p43>
 11. Clauson J, Hsieh YC, Acharya S, Rademaker AW, Morrow M. Results of the Lynn Sage Second-Opinion Program for local therapy in patients with breast carcinoma. Changes in management and determinants of where care is delivered. Cancer. 2002 Feb 15;94(4):889-94. doi: 10.1002/ncr.10318. PMID: 11920455.